

F

GB

D

NL

I

E

P

GR

FIN

DK

S

N

TU

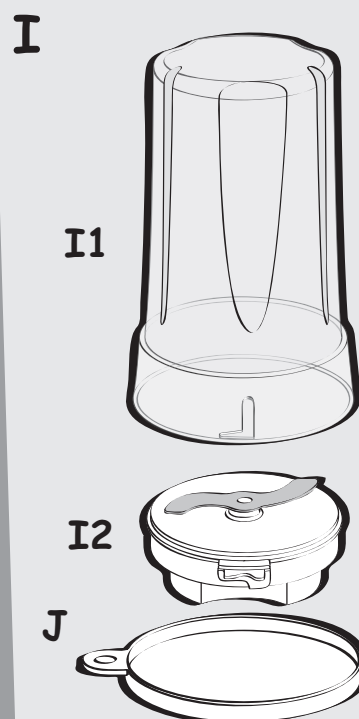
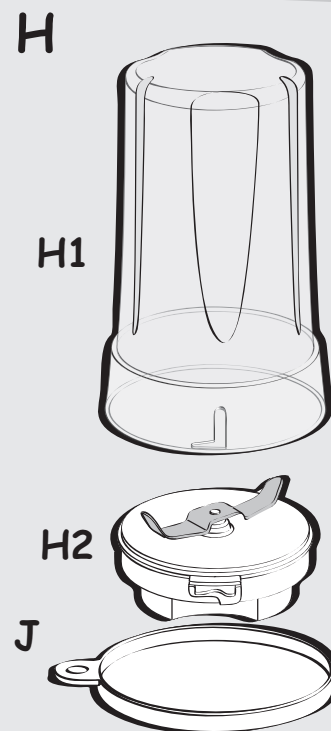
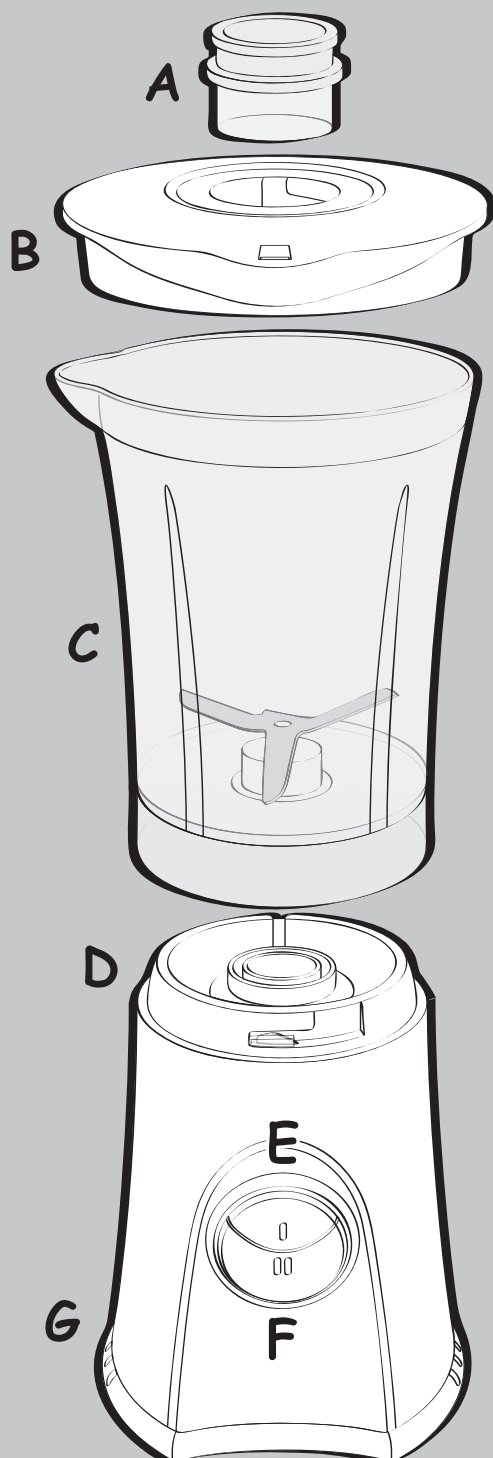
MAL

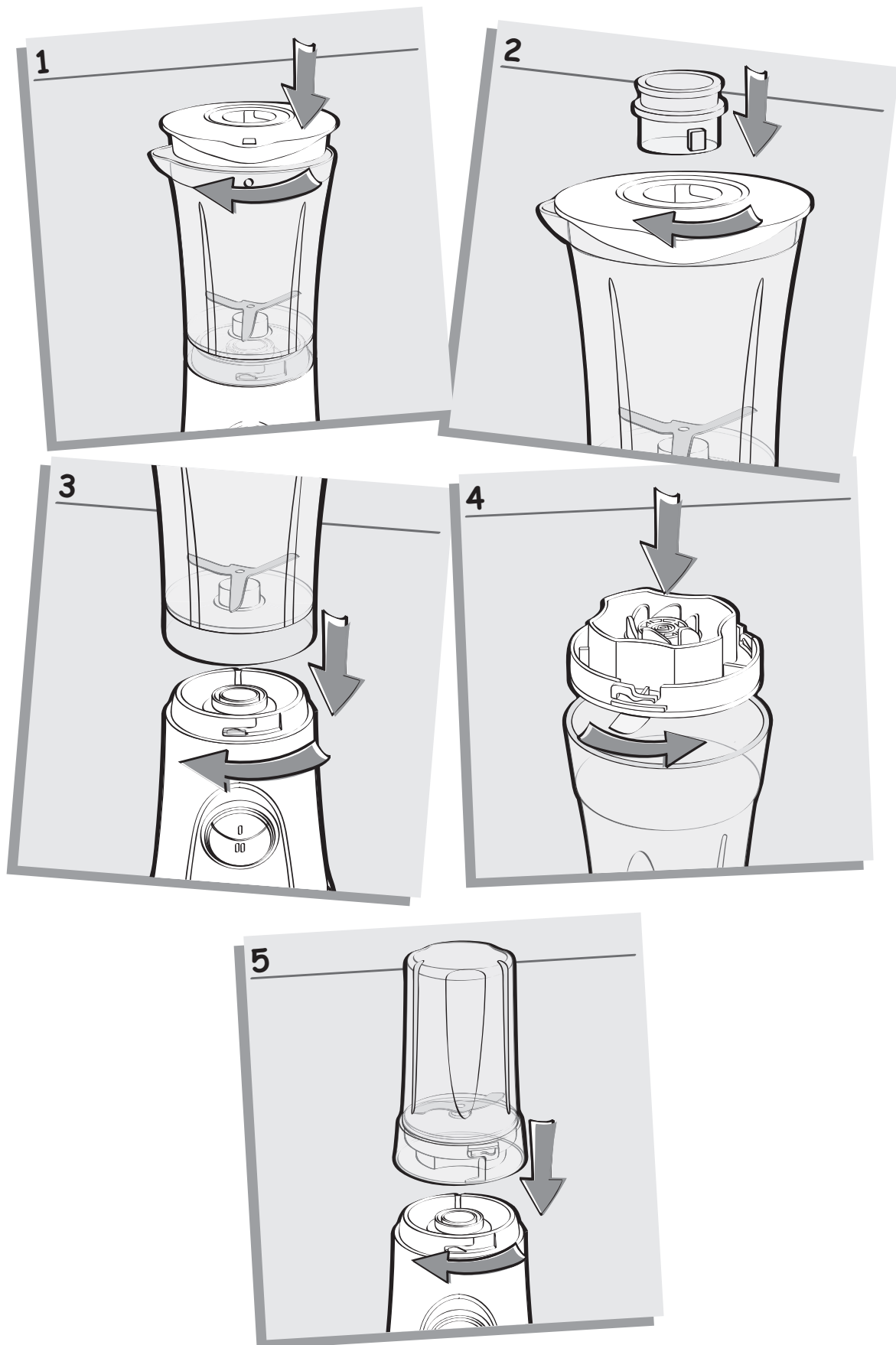
ROK

THA

AR

IR





## SAFETY INSTRUCTIONS

- Before using your appliance for the first time, please read these instructions carefully and follow them very closely. The manufacturer cannot be held responsible for any incorrect use or failure to comply with these instructions.
- This appliance is not intended for use by persons (including children) with reduced physical, sensory or mental capabilities, or lack of experience and knowledge, unless they have been given supervision or instruction concerning the use of the appliance by a person responsible for their safety.
- Children should be supervised to ensure that they do not play with the appliance.
- This appliance complies with the technical rules and standards in force.
- Before first use, check that the voltage on the rating plate of the appliance matches that of your electrical installation.
- Always unplug the appliance from the mains if it is left unattended and before fitting/removing accessories or cleaning it. Do not unplug your appliance by pulling on the power cord.
- This product has been designed for domestic use only. Any commercial use, inappropriate use or failure to comply with these instructions, the manufacturer accepts no responsibility and the warranty will not apply.
- Do not use your blender if it is not working properly, if it has been damaged or if the power cord or plug have been damaged. If the power cord is damaged, it must be replaced by the manufacturer, an approved after-sales centre or a similarly qualified person to avoid any danger.
- All repair work other than cleaning and basic maintenance by the customer must be done by an approved after-sales centre.
- Use your blender on a work surface that is flat, stable, heat-resistant, clean and dry and away from water splashes.
- Never place your fingers or any other object in the blender while the appliance is working.
- **Handle the blades with care as they are very sharp and may injure you.**
- Never put the appliance, the power cord or the plug in water or any other liquid.
- Do not leave the power cord within reach of children, close to or in contact with the hot parts of your appliance, close to a heat source or a sharp edge, or in contact with the blades.
- Never use the blender or its accessories without ingredients and never pour boiling liquids into it.
- Do not place the blender jar or the accessories in a microwave oven.
- Do not allow long hair, scarves, ties, etc. to dangle over the blender jar or the accessories while they are working.
- Use only original components and accessories. The manufacturer cannot accept any liability if this is not the case.
- Do not use outdoors.
- Do not remove the lid **(B)** before the blades have completely stopped.
- Never use this appliance to mix or stir anything other than foods.

**CAUTION:** never pour or blend liquids or ingredients whose temperature is higher than 80° C (176° F). When blending hot ingredients, keep hands well away from the lid **(B)** and measuring cap **(A)** in order to avoid any risk of burning.

## DESCRIPTION

- |                                |   |
|--------------------------------|---|
| <b>A</b> Measuring cap         | <b>H</b> Grinder accessory (depending on model) |
| <b>B</b> Lid                   | <b>H1.</b> cup                                  |
| <b>C</b> Blender jug           | <b>H2.</b> Blade unit                           |
| <b>D</b> Safety locking system | <b>I</b> Chopper accessory (depending on model) |
| <b>E</b> Low-speed button      | <b>I1.</b> cup                                  |
| <b>F</b> High-speed button     | <b>I2.</b> Blade unit                           |
| <b>G</b> Motor unit            | <b>J</b> Chopper / grinder lid seals            |

## SAFETY LOCKING SYSTEM (D)

The appliance cannot be started if the blender jug **(C)** or the accessories **(H or I)** have not been

placed or fitted correctly onto the motor unit **(G)**.

## BEFORE USING YOUR BLENDER FOR THE FIRST TIME

- Before using the blender for the first time, clean all the accessories **(A, B, C, H & I)** in warm water and washing up liquid (except for the motor unit **(G)**). See "Cleaning" §). Rinse and dry them carefully.
- **CAUTION: the blades are very sharp, handle them with care when cleaning or using your appliance.**
- Ensure that all packaging has been removed before using the blender.

## USING THE BLENDER

The blender can only be used for preparations such as smoothies, milk-shakes and sauces or mixing ingredients (cooked vegetable soups, waffle and pancake batter). Do not use for processing coffee beans, hard spices or grinding sugar.

**1. Place the ingredients in the blender jug (C).**

Never pour or process liquids or ingredients whose temperature is higher than 80 °C. Instead cool them slightly first.

Refer to the table below for the maximum quantities to be used. Do not exceed the maximum quantities stated in the table below.

- 2. Lock the lid (B) onto the blender jug (C)** (Fig. 1).
- 3. Fit the measuring cap (A) into the opening in the lid and turn it to lock it into place.** (Fig. 2).
- 4. Place the blender jug (C) onto the motor unit (G).** Lock the blender jug (C) correctly (Fig. 1).

Ingredients	Quantities (Max)
Fruits (kiwis, bananas, strawberries, pineapple...)	200g
Vegetables (tomatoes, avocado...)	200g
Vegetable soups	200g cooked vegetables + water (optional)
Milk-shakes	100g fruit + 300ml milk

**5. Plug in the appliance and switch it on by pressing the low-speed or high-speed button (E or F).** The blender will not operate if the blender jug is not correctly fitted.

**6. Hold the appliance firmly with both hands during operation.** Do not operate the appliance for more than one minute at a time. After blending for one minute, switch off the appliance and wait for 15 minutes before blending again. If the appliance becomes hot, let it cool down before you continue using it.

**- Allow the appliance to cool down for 1 hour after 5 consecutive uses.**

- To add ingredients while the blender is in use, insert them through the feeder hole in the lid (B).
- Cut the ingredients into small pieces (approx. 15mm x 15mm) before putting them in the blender jug (C). Do not process a large quantity of ingredients at the same time.

**Recommendations:**

- Do not operate the appliance more than one minute continuously.

**CAUTION:** If ingredients remain stuck to the blades, unplug the appliance and remove them with a spatula.

## USING THE CHOPPER AND GRINDER ACCESSORIES (H or I) (depending on model)

The chopper accessory (I) allows you to chop ingredients such as meat (up to 80g cut into pieces), onions, garlic, ginger...

The grinder accessory (H) allows you:

- to grind coffee beans (up to 80g)
- to grind or chop various spices (chilies), rice, dried fruits and nuts such as hazelnuts, almonds.

**CAUTION:** Do not handle the accessory blade (H2 or I2) as they are very sharp and may cause injury.

- 1. Cut the ingredients into small pieces (approx. 15mm x 15mm).** Place them into the chopper or grinder lid (H1 or I1). Refer to the table below for the maximum quantities to be used.

Ingredients	Quantities (Max)	Accessory
Meat (cut into pieces)	80g	I
Spices (chilies, pepper...)	50g	H
Coffee beans, rice	20-80g	H
Onions	20-100g	I
Garlic	20-100g	I

2. Fit the chopper or grinder blade unit (**H2 or I2**) onto the chopper or grinder lid (**H1 or I1**). Lock the blade unit by turning it clockwise (Fig. 4).
3. Turn the assembled chopper or grinder accessory upward. Place the chopper or grinder accessory onto the motor unit (**G**) and lock it (Fig. 5).
4. Plug in the appliance and switch it on by pressing the low-speed or high-speed button (**E or F**).

The chopper or grinder will not operate unless the blade unit has been correctly fitted.

5. Hold the accessory firmly with both hands during operation. Do not operate the accessory for more than 30 seconds at a time.
6. You can store the preparation in the fridge by removing the chopper or grinder blade unit, and covering the lid with the seal (**J**).



## CLEANING

- Unplug the blender and remove all the accessories.
- Handle the blades (**H2 or I2**) with care as they are very sharp.
- Wipe the motor unit (**G**) down with a damp cloth. Dry carefully.
- Never plunge the motor unit (**G**) into running water.
- To make cleaning easier, always wash the removable parts in warm water and washing up liquid immediately after use.
- The blender jug (**C**), the lid (**B**), measuring cap (**A**) and the accessories (**H1, I1 & J**) may be cleaned in the dishwasher in the upper tray, only using the "ECO" or "SLIGHTLY SOILED" programme.

## RECYCLING



### Environment protection first!

-  Your appliance contains valuable materials which can be recovered or recycled.
-  Leave it at a local civic waste collection point so that it can be recycled.

### HELPLINE:

If you have any product problems or queries, please contact our Customer Relations Team first for expert help and advice:

0845 602 1454 - UK  
(01) 677 4003 - Ireland